



INTENSIFY
Professional Services

Capabilities

Consulting, project and labour services in the following areas

1

Management Consulting

2

Project Engineering

3

Asset Management

4

HSEC

Overview

Our Business

Intensify Professional Services work with mining companies and contractors, construction organisations and indigenous businesses.

We have significant experience on client side and have established alliances with industry experts and service providers. We provide a comprehensive range of expertise and work collaboratively to meet your objectives.

We pride ourselves on sustainability and the positive impact we can have on people, the environment & our communities.



Project Engineering

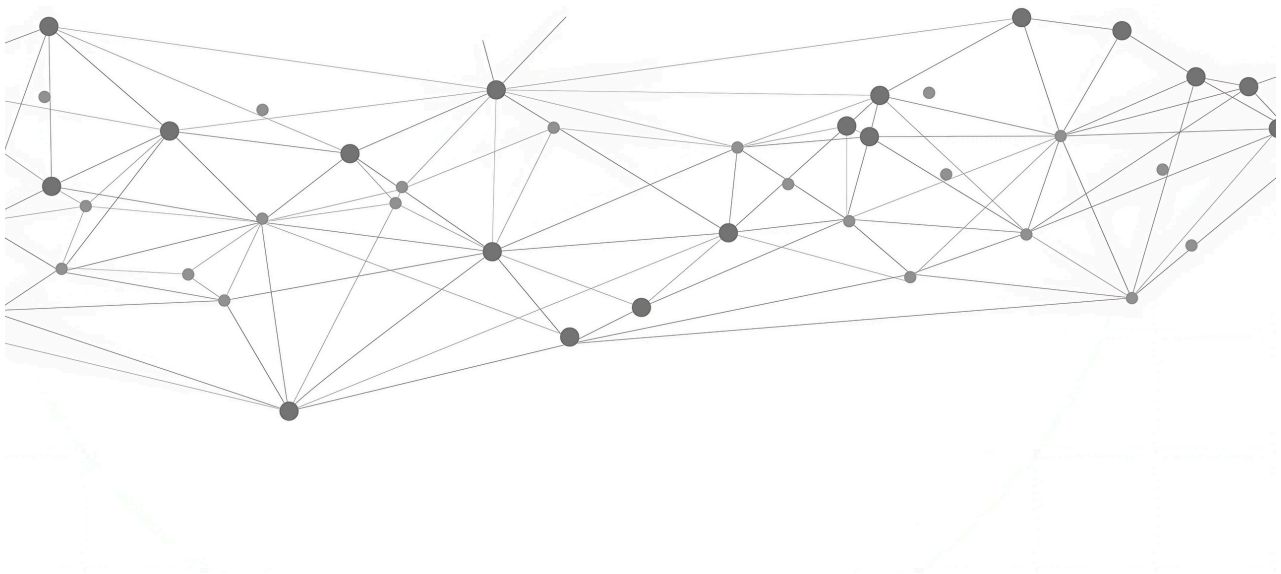
Across all disciplines

- Hands on project management for all project phases, including studies, engineering and construction
- Short term projects or embedded labour placement
- Repair of equipment and fabrication of new items
- Offshore engineering drafting services
- Wear liner analysis and local supply
- Mobility solutions and communications services
- Risk analysis (FMEA, HAZOP etc)
- Quality assurance and quality control (QA/QC) services
- Project health analysis and lessons learnt sessions
- Business case analysis and KPI development
- Training of personnel to improve project delivery performance



Business Development, Process Improvement, Coaching

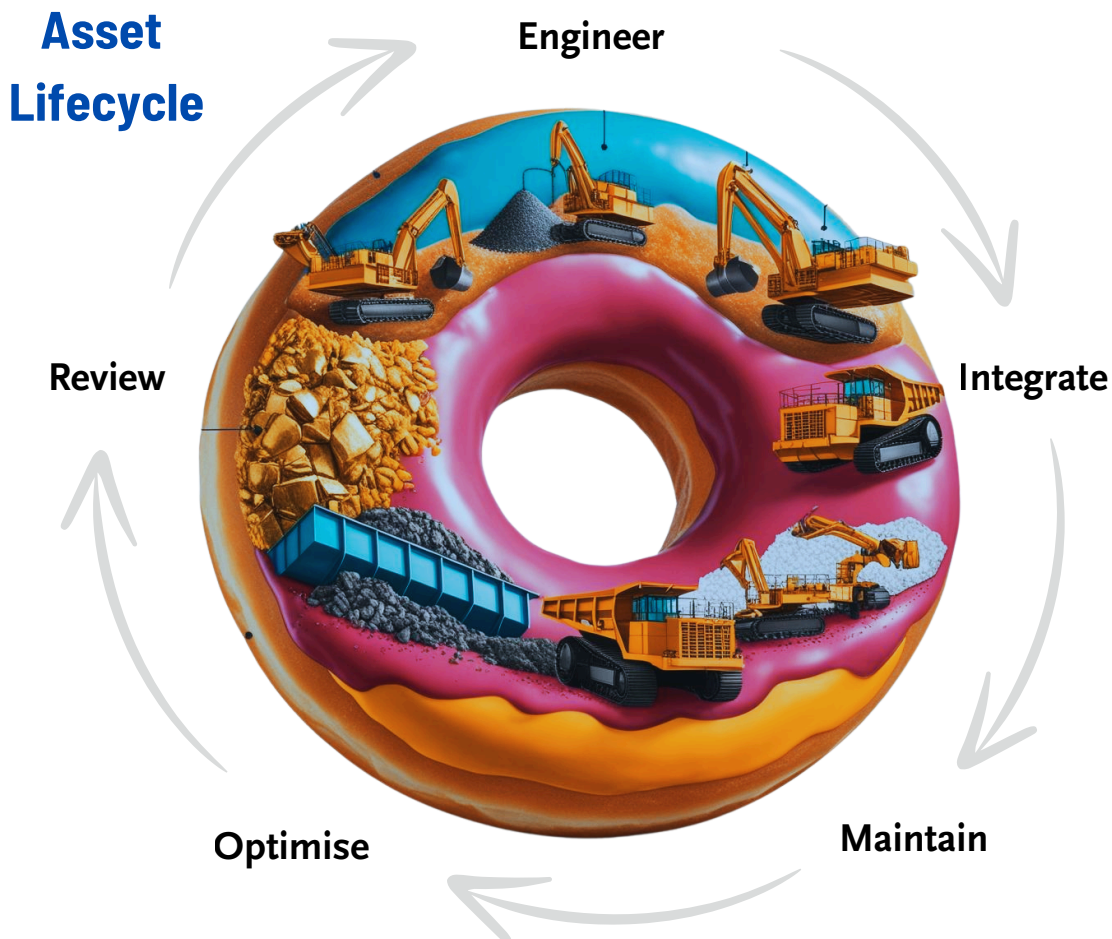
- Connect to Mining, Rail and Infrastructure customers, pursue project opportunities, shape tenders and presentations
- Review processes and enable sustainable growth
- Improve mining, materials handling and plant performance
- Develop technical personnel into effective leaders
- Establish high performing teams, create a culture of respect and inclusiveness, manage stress and build resilience.
- Lower costs through sub contractor tender processes
- Integrate innovation and technology
- Manage change more effectively



Asset Management

Effectively manage assets across the lifecycle

- Asset design, upgrades and improvements
- Maintenance effectiveness reviews
- Reliability solutions including asset health technology
- Asset inspections, risk rating and criticality assessments
- Defect repair scoping with early contractor involvement (ECI)
- Equipment failure investigation and root cause analysis
- Work management and shutdown analysis and training
- Supply chain performance analysis



Improve safety culture and engagement with communities

- Varying levels of incident investigation depending on severity (Eg TapRoot, Essential Factors, 5 Whys)
- Safety coaching for leaders and team members
- Facilitate safety pauses and develop improvement plans
- Safety audits and reviews
- Risk Assessment facilitation
- Tender support
- Psychosocial risk management
- Indigenous engagement strategies



Our Team

Michael Courtney, Director



With 25 years of experience in the Australian mining, railway and engineering sectors, including more than 15 years on the client side at Rio Tinto, Michael is committed to assisting companies to achieve their objectives.

He holds a Bachelor of Mechanical Engineering with Honours and a Bachelor of Science from UWA, along with a Diploma in Business, a Six Sigma Blackbelt and various leadership and safety certifications.

Key Skills

- Project and portfolio management
- Designing programs of work to improve capital efficiency
- Creating growth plans to assist businesses to thrive
- Communication and developing strong relationships
- Analysing return on investment
- Safety leadership, coaching and risk analysis
- Joining project engineering techniques with sustainable asset management tools to improve asset reliability
- Technology and innovation integration
- Team building and leadership development

Matthew Bernard, Business Development - Commercial



Over 20 years' commercial experience in projects across Western Australia, with senior commercial and leadership roles spanning client-side and contractor organisations including Fortescue, CBH, Downer, and Georgiou.

He holds a Master of Business Administration from the University of Western Australia, is a Chartered Accountant (CA ANZ), and has a Bachelor of Business (Accounting) from Charles Sturt University.

Key Skills

- Commercial, financial and contract management of major rail and infrastructure projects
- Decarbonisation and zero-emission programs
- Client-side governance, tendering, and procurement frameworks
- Alliance and joint venture contract management
- Bid strategy and business case development
- Cost forecasting, risk management, reporting to board level
- Stakeholder engagement, process improvement, ERP implementation, and financial control

Our Team

Peter Clarke, Electrical Project Delivery, Business Development



Over 20 years' experience delivering Electrical and Instrumentation works across mining, oil & gas and heavy industrial projects. Extensive experience in live plant, brownfields and high-risk SIMOPS environments.

Business Development specialist who enjoys client engagement and working with indigenous organisations. An active mentor and advocate for mental health awareness and peer support.

Key Skills

- Identifying customer needs and aligning technical solutions, services and commercial models.
- Market intelligence, opportunity development and support of CAPEX and maintenance strategies.
- Promoting safety leadership, mental health awareness and wellbeing initiatives in operational teams.
- Mentoring and coaching personnel, fostering open communication and psychologically safe workplaces.
- Strong understanding of operational risk, safety systems and live plant environments.
- Practical, values-driven approach to building trusted, long-term client partnerships.

Our Team

Sam Krakolinig, Lead SMP Project Engineer



Specialising in mining and decarbonisation projects, working remotely at various FMG, Rio Tinto and BHP sites. Sam is currently posted on the CLAHDO project, one of the largest brownfields projects underway in the Pilbara.

He holds a Bachelor of Engineering Science from Edith Cowan University, a Diploma of Project Management and various construction safety qualifications.

Key Skills

- SMP and civil project delivery (hydrogen refuelling, conveyor, and firewater upgrades)
- Structural upgrades and remediation
- Project management and site supervision of technical teams
- QA/QC systems, inspections, and compliance with heritage requirements
- Primavera, MS Project, and AutoCAD for scheduling and drawings coordination
- Safety leadership in live plant and FIFO environments
- Continuous improvement in execution and handover of capital works

Our Team

Roland Domoraud, Lead Electrical Project Engineer



15 years' experience in electrical fixed plant and decarbonisation projects. Roland has held senior engineering and testing roles with Fortescue, Civmec, Rio Tinto and BHP, delivering complex E&I scopes from design through commissioning.

He holds a Bachelor of Engineering (Electronic Systems) from Edith Cowan University, a Diploma of Project Management, and leadership, governance, and HV switching qualifications.

Key Skills

- Electrical and instrumentation (E&I) project delivery, testing, and HV commissioning
- Decarbonisation infrastructure (3 MW Fast Charger, hydrogen/fuel-cell systems)
- Work packs, drawings, FAT/SAT, and multidisciplinary contractor coordination
- Risk management, HSEQ leadership, and regulatory compliance
- Client-side engagement, technical query management, and scope variation negotiation
- Operational readiness, documentation, and successful handover of capital works

Our Team

Pat Ngo, Principal Estimator



Over 20 years' experience in estimation and project controls across mining, rail, ports, marine, infrastructure, renewable energy, decommissioning and rehabilitation. Pat has worked on both the owner and consultant side, managing estimates from AUD 100k to AUD 15 billion.

He holds an Associate Diploma of Civil & Structural Engineering, supported by multiple technical and management qualifications and is currently completing a Bachelor of Civil & Construction Engineering at Curtin University.

Key Skills

- Estimate governance, benchmarking and assurance reviews
- Estimation leadership across study and execution phases
- Cost and schedule risk analysis (Monte Carlo simulations)
- Rail and renewable energy project experience
- Quest, Touchtone, AusES, Cleopatra and @Risk software expertise
- Advanced Microsoft Excel, Word and PowerPoint
- Coaching and mentoring junior estimators and engineers
- Business case and investment approval support

Our Team

Erich Duque, HME Asset Management



25 years experience in mining and heavy industry across Australia and South America. He specialises in data analysis, reliability and continuous improvement for mining operations, particularly heavy mobile equipment fleets.

He holds a Bachelor of Mechanical Engineering from UDN Columbia, a Six Sigma Black Belt and various asset management, safety and leadership certifications.

Key Skills

- Measurable improvements in safety, availability and total cost of ownership for autonomous and conventional haulage assets.
- High-performing projects using data-led decision-making to unlock performance gains
- Governance of engineering standards and processes
- Advises global mining clients on fleet selection and performance enhancement
- Lean six sigma continuous improvement to drive sprint projects to improve performance
- Developing and auditing maintenance strategies and tactics

Liam Franklyn, Asset Management & Leadership Development



25 years experience in iron ore, gold, nickel and lithium processing including 10 years senior management experience within mining organisations. Liam's most recent role was Head of Operations for Arcadium Lithium.

He holds a Bachelor of Materials Engineering with Honours and a Bachelor of Science (Chemistry) from UWA, along with various leadership and safety certifications.

Key Skills

- Continuous improvement processes and systems
- Productivity improvement including cost reduction
- Values-based leadership coaching and mentoring
- Global Health, Safety and Security alignment and transition
- Effective care and maintenance set ups
- Asset integrity programs
- Work management metrics
- Business transformation associated with mergers and acquisitions

Our Team

Dean Morison, Principal Engineer - Structural



With over 30 years of experience in structural engineering, Dean has worked on both the owner's team and as a consultant. He has an expert level knowledge of materials handling assets in ports.

Qualifications include BE(Civil) MIEAust, CPEng, NER, RPEQ.

Key Skills

- Working with organisations to reduce the cost of structural engineering projects or maintenance activities, cutting through the noise to get to the heart of a problem.
- Providing engineering services across the full asset lifecycle, from design and construction through to maintenance and decommissioning.
- Developing targeted inspection regimes, troubleshooting structural failures, working closely with operations and maintenance teams to balance risk, performance, and cost.
- Structural inspections and analysis, failure analysis, remediation and life extension.
- Delivering practical solutions grounded in real-world constraints.

Our Values

Our values define how we operate and partner

Our Values

01

Empower People, Respectfully

Lead with Integrity and Empathy

02

03

Deliver Practical, Lasting Solutions

Empower People, Respectfully

We join teams to both deliver projects and to undertake knowledge transfer during the work. Through coaching and leadership development we help to drive culture and grow careers.

Lead with Integrity and Empathy

We work on understanding mindsets and behaviours and assist with managing change and growth. We deliver with professionalism, compassion, and forward-thinking strategies.

Deliver Practical, Lasting Solutions

Our services are grounded in hands-on experience and scoped to deliver real, sustainable value.

Case Studies

Project Engineering

Iron Ore Plant Upgrades

Challenge

A construction client required experienced project engineering support to deliver brownfields upgrade work in live operating environments. Internal resources were limited, creating pressure on engineering assurance, site coordination and timely delivery.

Approach – Embedded Project Engineering Support

- Coordinated with multiple engineering disciplines and construction teams to safely and efficiently execute the scope of work
- Developed work packs, undertook site inspections, solved problems and enabled work fronts to progress according to schedule
- Reviewed and closed out ITPs and Manufacturer's Data Reports
- Worked flexibly both Perth-based and on-site to suit project phase

Outcomes

- Supported safe, timely delivery of brownfields upgrade activities
- Maintained engineering quality and compliance during live works
- Reduced pressure on internal teams and improved delivery confidence



Ore Processing and Delivery to Market

Challenge

An Indigenous business required experienced management support to shape and win a complex tender. The project is unique, involves multiple local, national and international stakeholders and is to be delivered with an Alliance framework.



Approach – Project Management Leadership

- Engaged stakeholders, analysed benefits, risks and mitigations
- Developed project delivery plan and business case.
- Reviewed contract requirements, approvals pathways and constraints
- Developed high level project documentation including scopes of work, action registers, schedules, risks, cost and sales models
- Developed a tender submission which clearly articulated the project vision, including the distinctive benefits to the indigenous communities of the North West of Australia.

Outcomes

- Submission of a clear, compelling and successful tender response
- Improved clarity of scope, risks and execution requirements
- Positioned the project for transition into detailed design and delivery



Case Studies

Management Consulting



Accelerating Engineering Services Growth

Challenge

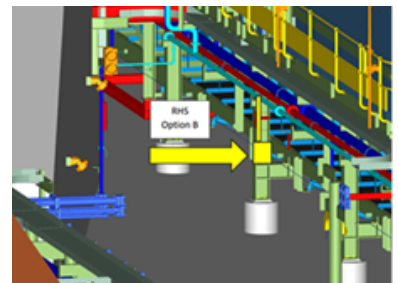
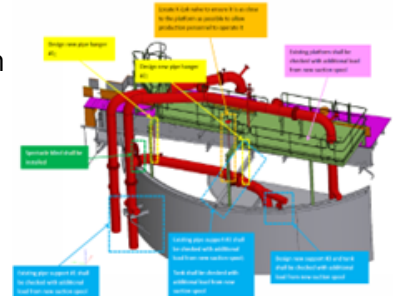
An international engineering business sought to increase revenue locally in Western Australia. While technical capability existed, teams were focused on delivery, limiting strategic focus and new customer engagement.

Approach - Six Sigma DMAIC

- Defined clear growth objectives and success measures
- Actively engaged mining operators and Tier 1 suppliers
- Conducted internal capability reviews and Voice of Customer analysis
- Designed an improved delivery model, processes and governance
- Developed marketing and commercial engagement mechanisms

Outcomes

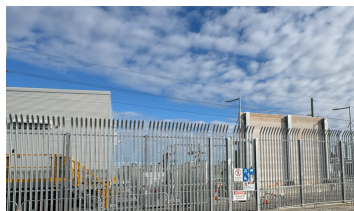
- Improved delivery quality, consistency and client confidence
- Established a clear, scalable multi-year growth plan
- Positioned the business to pursue new opportunities with confidence



Construction Project Pursuit & Tendering

Challenge

A construction company had multiple large projects underway. However, these were ~80% complete and follow-on work was required for teams to roll into, enabling retention of staff and continued profitable revenue.



Approach - Structured Project Pursuit Plan

- Analysed business strengths and developed case studies aligned to both core capability and customer needs
- Opened multiple streams of customer engagement
- Identified opportunities, shaped and submitted EOIs, tender responses and customer presentations
- Conducted site visits, conference engagements and established alliances with key sub contractors to increase win probability
- Set up tracking and review processes to support clear decisions



Outcomes

- Clear visibility of project pipeline and win potential
- New customer relationships and early action to win replacement work
- Developed projects and reduced delivery risk

Case Studies

Asset Management & HSEC



Offsite Repairs and Upgrades to Mining Assets

Challenge

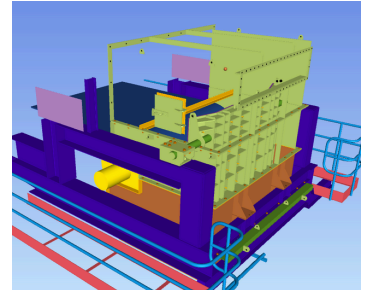
The client required additional engineering and coordination capacity to manage workshop fabrication, repairs and upgrades. Internal teams were stretched, creating a risk to delivery timeframes, quality & communication.

Approach - Embedded Asset Management Support

- Supported scoping and execution of design, repair and upgrade works
- Provided day-to-day problem solving and commercial awareness
- Reporting and work in progress meetings to maintain alignment with customer needs and scope changes
- Led recruitment process for additional offsite repairs coordinator

Outcomes

- Improved coordination and control of repair and sustainment activities
- On time delivery enabling site shutdown works to proceed
- Established an ongoing pipeline of work and supporting development and award of new contracts



Construction Site Workplace Audit

Challenge

A live construction site required an independent HSEQ review to verify that safety systems, controls and site practices were in place and being applied as intended.

Approach - Site-Based HSEQ Audit

- Conducted on-site evaluation using a formal WHS checklist
- Reviewed inductions, pre-starts, risk assessments and permits-to-work
- Inspected site conditions including plant, traffic management, access and housekeeping
- Verified use of critical controls such as emergency plans, PPE, barricades and signage, vehicle safety features, communications
- Engaged directly with site personnel to confirm understanding of hazards and application of controls

Outcomes

- Confirmed key HSEQ systems were in place and being applied on site
- Provided clear, documented findings to support ongoing compliance and safe execution of works





INTENSIFY

Professional Services

office@intensifypro.com | www.intensifypro.com

The information provided in this brochure has been provided as general advice only.

The services listed are indicative and generation of a scope of services is required prior to entering into a commercial arrangement. No warranty is given in respect of the information provided and accordingly neither Intensify Professional Services nor its related entities, employees or agents shall be liable on any ground whatsoever with respect to decisions or actions taken as a result of you acting upon such information.

© Copyright 2026 Intensify Professional Services All rights reserved Commercial in Confidence